

# WIPPELL'S

## SHEFFIELD PLATE APPOINTMENTS



In 1743 Thomas Boulsover, a master cutler of Sheffield, discovered that bars of silver and copper when compressed together under heat would fuse and could be rolled out into sheet metal and it had the working qualities of solid silver at a fraction of the cost. This was the beginning of over a century of work from Sheffield that became synonymous with the highest attainable standards in metal craftwork. The introduction of electroplating in the 1840s with its applications to a wider range of products was helped by the reputation of "Sheffield Plate" and the term is still used by the discerning to identify silver plated work that is of the finest quality.

We are pleased to present to you our new SHEFFIELD PLATE range of metalwork. The methods of making and the superb finishes achieved are in the time honoured traditions of "Sheffield Plate" and offer a good choice of communion wares and other appointments at keenly competitive prices. Our Sheffield Plate range is produced in the birth place of Thomas Boulsover and the skills that have been passed down for over 250 years are now available to you in a quality that is second to none.



## Old English Range



2743 This traditional Chalice is available 6½" high of 10 fluid ozs capacity, usually with 6" diameter well type paten all in a silver plated finish. Can also be supplied 4¾" high of 5 fluid ozs capacity with 5" diameter well paten.

2744 A matching Ciborium 7½" high with 250 wafer capacity. Also available 5¾" high for 100 wafers. All in silver plated finishes.





## Communion Wares



2745 This superb Communion set is illustrated in an all gilt finish and comprises Chalice & Paten 2743 and Ciborium 2744. Available in both sizes and individual items.

2748 In a silver plated finish this Lavabo set comprises cruet 4½" high with 7 fluid ozs capacity and a bowl 3½" in diameter. A tray is available 10" x 7" oval illustrated overleaf 2750.



2746 Illustrating the quality of our Sheffield Plate range this Flagon, supplied silver plated is 8" high inclusive of hinged lid and has a capacity of 30 fluid ozs.



2747 The style of this Flagon although traditional will complement most communion vessels, it is supplied in a silver plated finish, 7½" high including lid and has a capacity of 12 fluid ozs.



## Old English Range

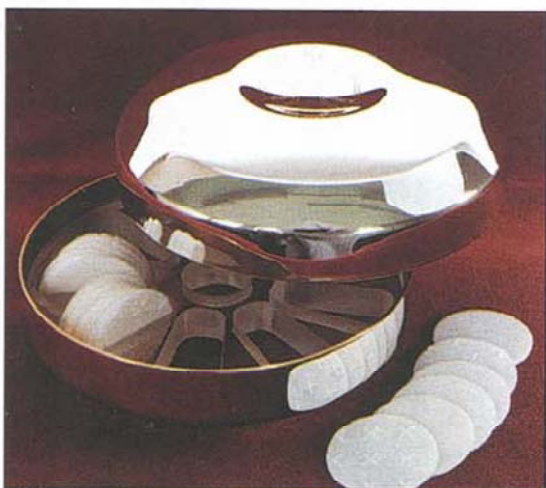


2749 Flagon in a silver plated finish, 5" high of 7 fluid ozs capacity. Available singly or as a pair with or without oval tray 2750. ◀

2750 This plain style oval shaped tray measures 10" x 7" and is suitable for Lavabo set 2748 or Flagons 2749. Top quality silver plated finish. See also style 2767 page 8. ▲

2751 This silver plated circular wafer box is 4½" in diameter fitted with an acrylic grid to accommodate 90 average wafers. If wafer capacity is critical please send 10 sample wafers for check purposes.

2753 Standing paten 4" high x 6" diameter in silver plated finish. ▼

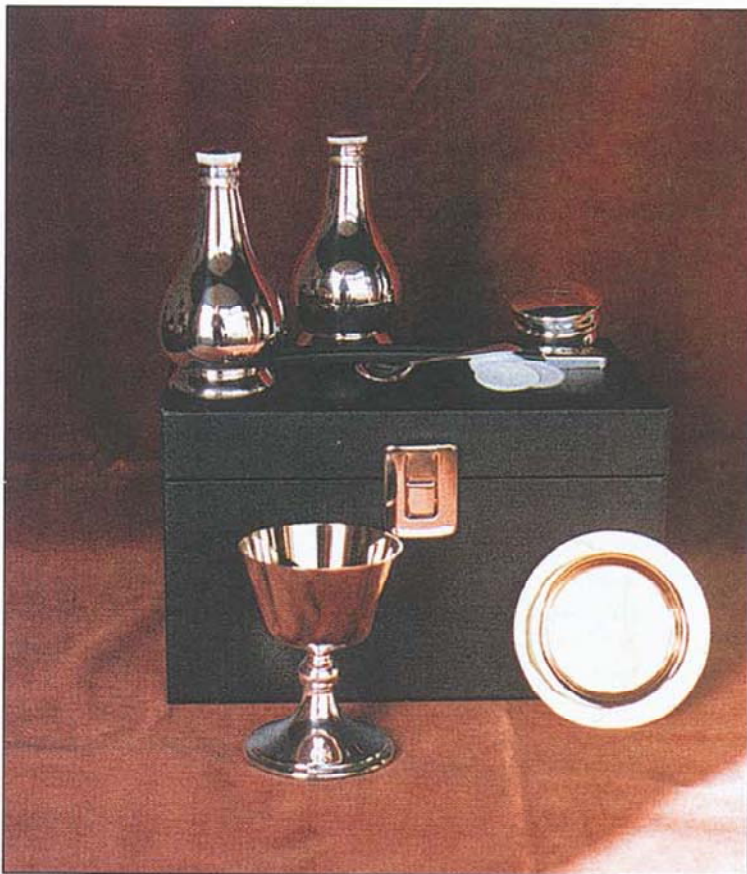


2752 Baptismal shell 4½" long in silver plated finish.

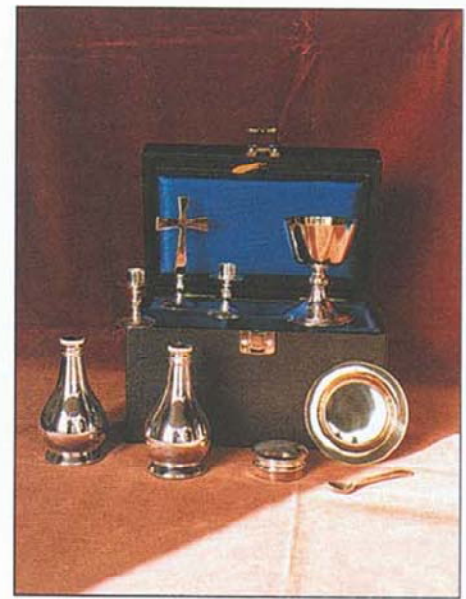
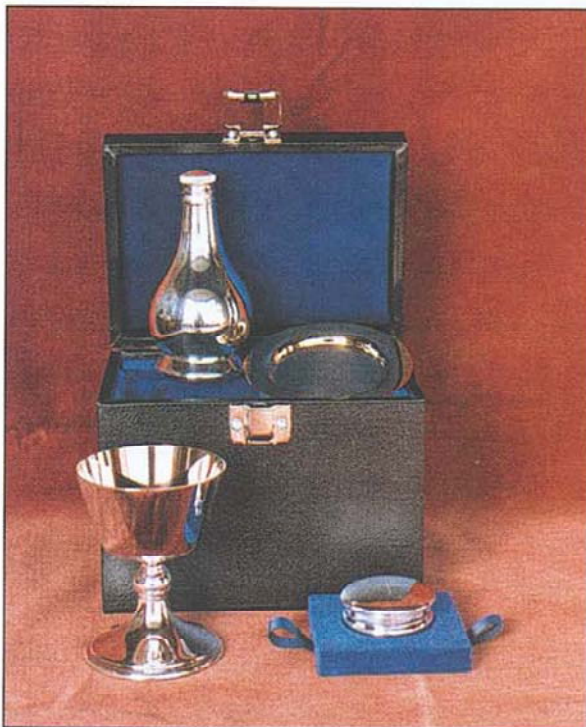




## Communion & Visitation Wares



**2754** This 6 piece Portable Communion Set comprises 3½" Chalice of 3 fluid ozs capacity, a 3¼" diameter paten, 2 all metal cruets 4" of 3½ fluid ozs capacity, a bread box 1¼" diameter and spoon all in quality silver plated finish in top loading style carrying case.



**2756** Illustrated is the 9 piece Portable Communion Set comprising the vessels described for set 2754 with the addition of Altar Cross and Candlesticks supplied in silver plated finish in top loading style carrying case.

NB Glass cruets are available as an alternative to all metal cruets illustrated – see price list for details.

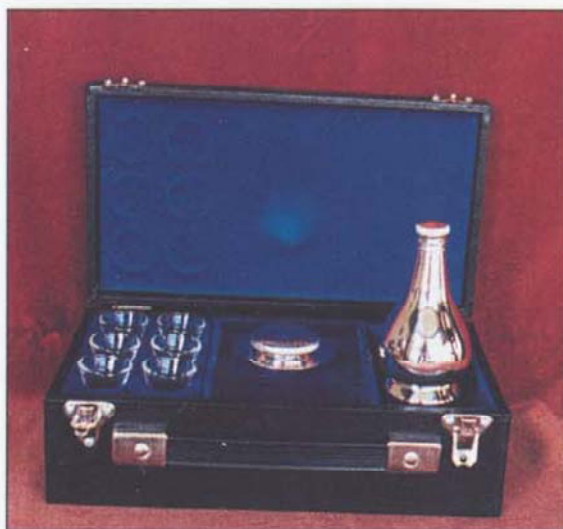
**2755** The 4 piece version of set 2754 contains Chalice & Paten, Bread Box and single all metal cruet in fitted top loading style carrying case.

**2757** This travelling Altar set comprises 4" cross and two 2" high candlesticks (accepts ⅜" candles) in quality silver plated finish in carrying case.





## Old English Range



- 2758 For Non conformist use this Portable Communion Set includes a single silver plated Cruet 4" high with 2 1/2" diameter bread plate and cover and is complete with 6 individual glasses in a fitted carrying case.



- 2759 Circular Individual Glass style tray 12" diameter in silver plated finish. Will accommodate 24 glasses.

- 2760/T Additional Stacking Tray for further 40 glasses.



- 2763 This traditional collection plate is 10" in diameter and supplied in a polished brass finish.

- 2764 Polished brass Alms Dishes available 12", 14" and 16" in diameter.

- 2760 Rectangular Individual glass style tray 15 1/2" x 7 1/2" in silver plated finish with provision for 40 glasses.





## Communion Wares



- 2761** This splendid Visiting Service in silver plated finish comprises Chalice 2743 4<sup>3</sup>/<sub>4</sub>" high with 5" paten, Ciborium 2744 5<sup>3</sup>/<sub>4</sub>" high, 2 matt finished glass cruets of 9 fluid ozs capacity complete with Cross and Candlesticks, all in a fitted carrying case 18" x 13<sup>1</sup>/<sub>4</sub>". Can also be supplied with Wafer Box 2751 as an option to the Ciborium.



- 2762** Featuring a 4" Crucifix with two 2" high candlesticks this silver plated sick call set also includes a Host Box, Holy Oil Stock and Holy Water Sprinkler all in silver plated finish and is supplied with stole and linen in a soft zipper carrying case, 7<sup>1</sup>/<sub>2</sub>" x 5" x 1<sup>3</sup>/<sub>4</sub>". Can be supplied without stole and linen.

## Colonial Range Communion Wares

- 2782** Ciborium in silver plated finish available 7" high x 4" diameter with capacity of 300 wafers; 6" high x 4" diameter (150); 5<sup>1</sup>/<sub>2</sub>" high x 3<sup>1</sup>/<sub>4</sub>" diameter (100) and 5" high x 3" diameter (50).



- 2783** Chalice in silver plated finish 7" high of 10 fluid ozs capacity and 5" high of 5 fluid ozs capacity.





## Colonial Range



2765 This silver plated Cruet  $3\frac{1}{2}$ " high of 4 fluid ozs capacity is available singly or as a pair and a suitable tray is illustrated on page 4 (2750) and on page 8 2767 can also be supplied with gilded inside.

2766 These Flagons in silver plated finish are  $5\frac{1}{4}$ " high of 9 fluid ozs capacity and are also available 6" high of 10 fluid ozs capacity. Trays 2750 and 2767 suitable.

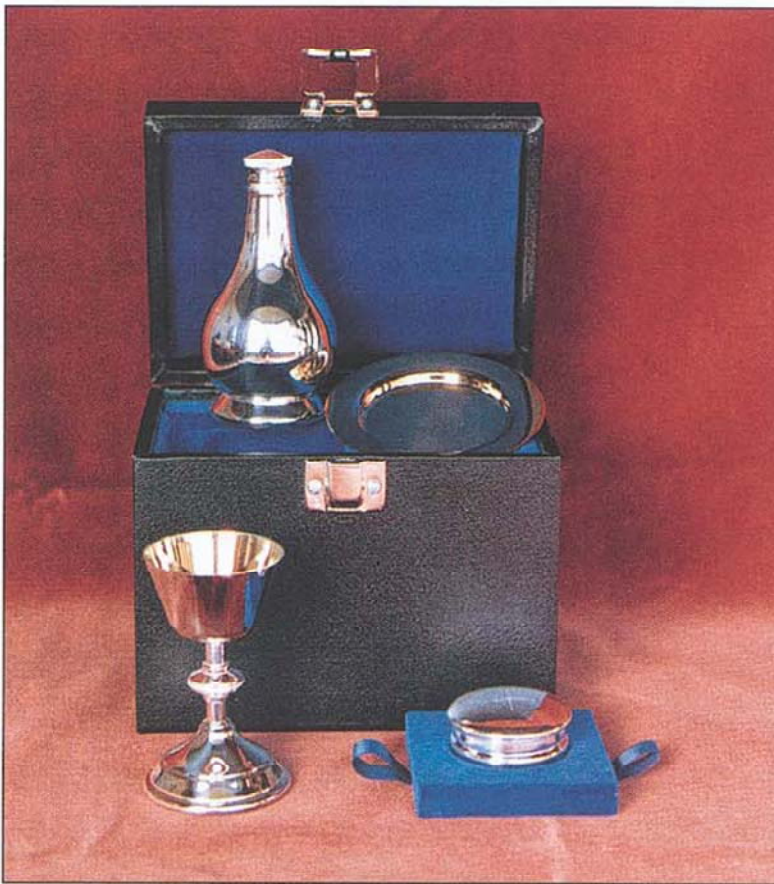
2767 The Acanthus leaf detailing to the handles and the gadroon edge are special features of this splendid silver plated oval Cruet Tray measuring 10" x 7". See also 2750 page 4.

2768 This solid brass Thurible is  $4\frac{3}{4}$ " in diameter and features hand chased leafwork in classic style, complete with substantial quality chains. The Incense boat and spoon can be supplied separately.





## Communion Wares



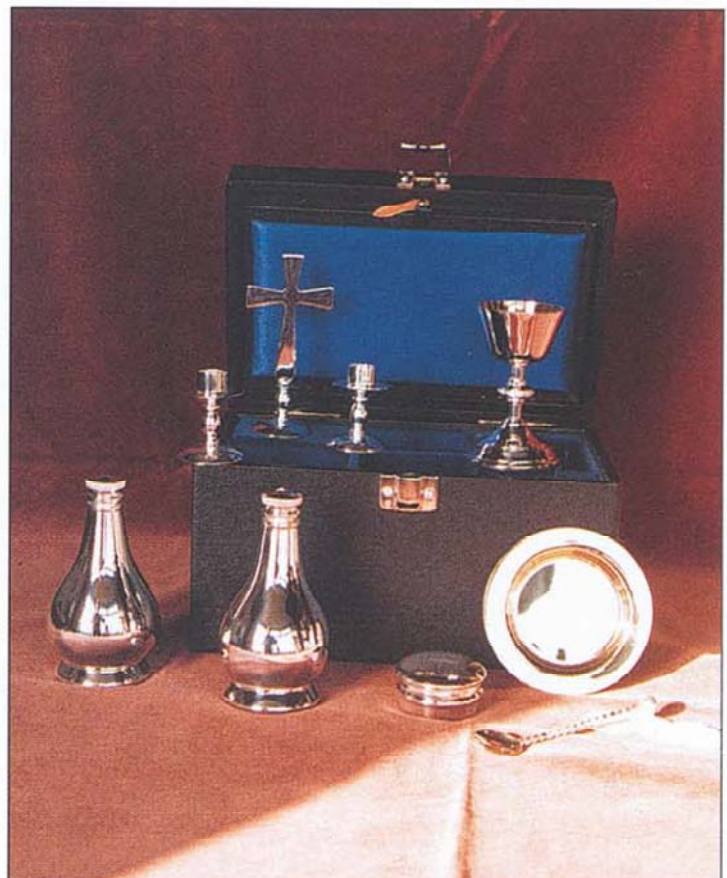
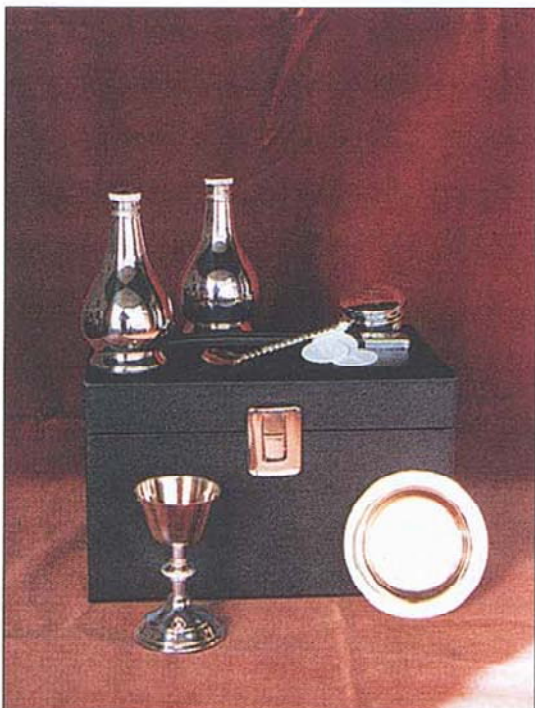
- 2769 Comprising Chalice  $3\frac{3}{8}$ " high of 1 fluid oz capacity with  $3\frac{1}{4}$ " Paten. cruet 4" high,  $3\frac{1}{2}$  fluid ozs capacity and Bread Box  $1\frac{3}{4}$ " this silver plated Communion Set is complete with velour lined carrying case.

### ENGRAVED INSCRIPTIONS

Please advise us at time of placing order if an engraved inscription is required. We usually cut inscriptions in Roman capital letters of proportionate size and will be pleased to advise you of the additional cost.

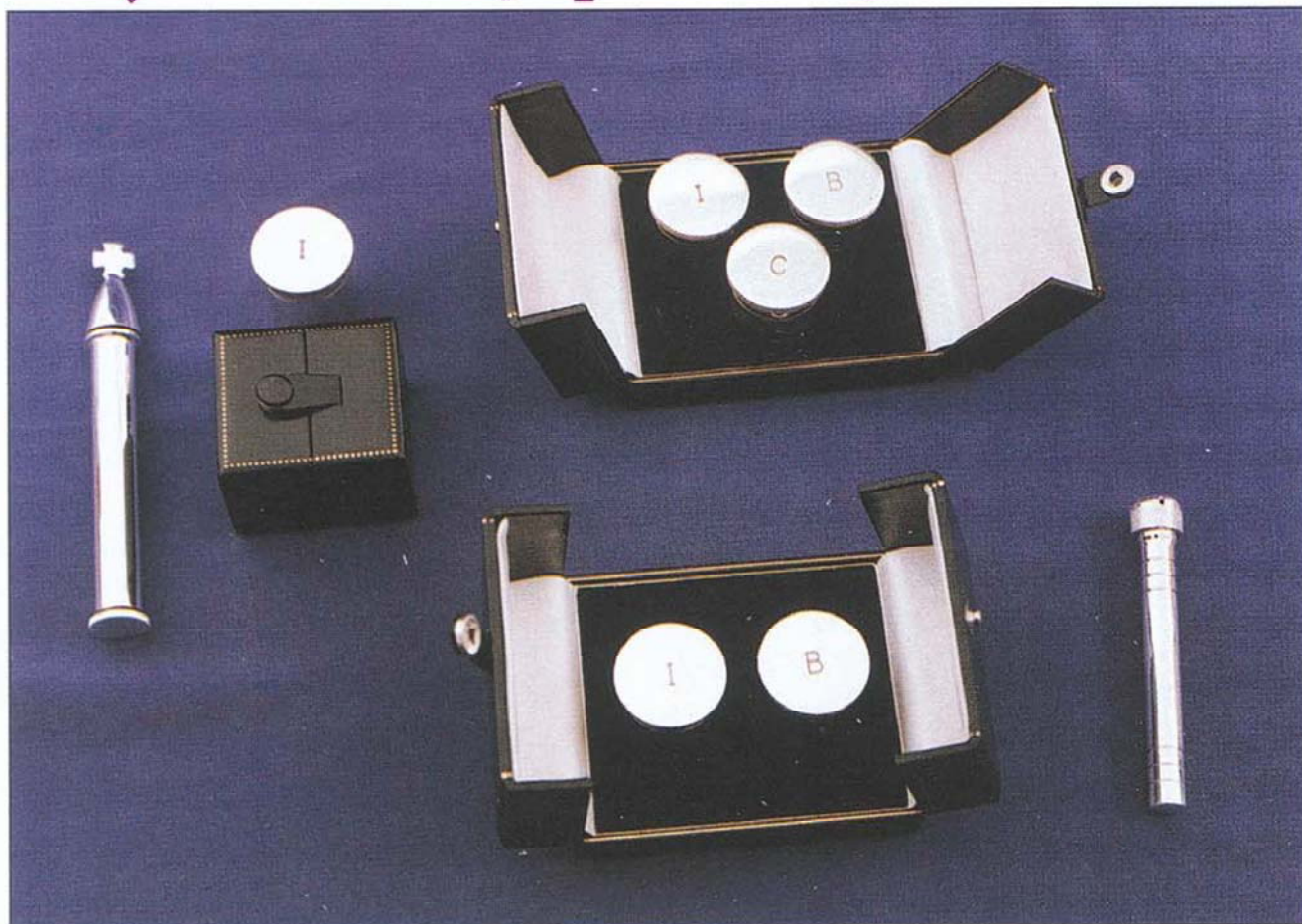
- 2771 Similar to style 2770 but with the inclusion of Altar Cross and Candlesticks 2757 (illustrated on page 5) all in velour lined carrying case.

- 2770 This 6 piece Communion Set in addition to the vessels described for 2769 has an additional Cruet and spoon.

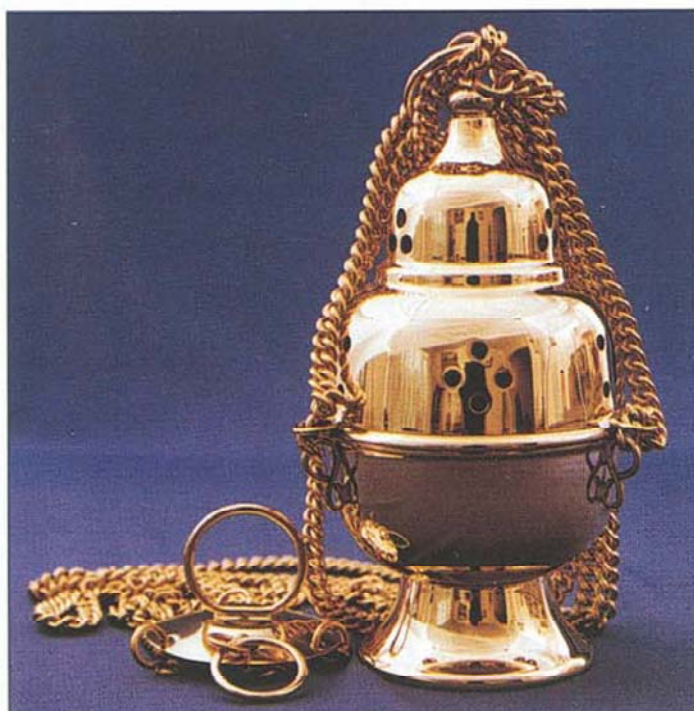




## Holy Oil Stocks, Sprinklers, Wands



- 2772 Single Holy Oil Stock silver plated in fitted case. 2772D Double Oil Stock Set, 2772T Triple Oil Stock Set, all in fitted cases.  
 2773 Holy Water Sprinkler in silver plated finish with cross cap.  
 2774 Holy Water Sprinkler in silver plated finish with plain cap.



- 2776 Churchwardens Wands in solid brass featuring Crown and Mitre finials. Supplied complete with hardwood stems. Also available in a silver plated finish.  
 2775 Traditional style Thurible 4" in diameter in polished brass with heavy gauge chains.



## *Pyxes, Lunette, Thurible & Crucifix*

- 2777 Thurible Set in pick hammered bark finish polished brass, 5" diameter, single decorative suspension chain. Boat and Spoon available separately and all in silver plated finish if preferred.

NB.

Our brass goods are supplied polished bright with a protective coating of clear lacquer. No responsibility will be accepted if this finish is damaged by accident, water or cleaning materials.



- 2778 Pyx in silver plated finish, 1 3/4" diameter with fitted case. Also illustrated in gilt finish.  
 2779 Neck Crucifix 3" with 36" chain in silver plated finish complete with fitted case.  
 2780 Funnel for decanting wine into cruets, 2" diameter supplied in case.  
 2781 Lunette and stand 4 1/2" high, 3" diameter, in all gilt finish.





# TERMS

All prices are net cash and are subject to alteration as necessary. Overseas prices are also subject to changes in the rates of exchange and we reserve the right to amend as required.

## METHODS OF PAYMENT

Payment can be made by personal cheques, Bank Draft, Access, Barclay Card (Visa), or International Money Order to our Head Office at Exeter, England. Our U.S.A. customers may also remit by personal cheque, Bank Draft, Visa or Master Card to our U.S.A. Office.

## PAYMENT

Payment is due on receipt of invoice.

Interest will be charged on overdue accounts as follows:

U.K. Mainland and overseas - 2% over U.K. Bank Rate.

U.S.A. - in accordance with State limits.

## CASH WITH ORDERS

We regret that goods ordered below £50 and \$75 in value cannot be supplied without payment in advance.

## PRE-PAYMENTS

**U.K. Mainland.** A 50% deposit payment on goods over £50 in value is usually required.

**U.S.A. and Overseas.** A minimum deposit of 50% of listed prices is required to secure an order over £50 or \$75 in value. However larger deposits and/or complete pre-payments apply to certain goods - despatch costs being billed separately.

## DESPATCH COSTS

Despatch costs are not included in listed prices, and charges for packing, postage, freight and insurance are extra. Unless otherwise instructed orders will be despatched by the safest and most economical means.

Where rapid transit is required outside England, Air Mail or Air Freight can be used, at extra cost.

## SPECIAL ORDERS

Goods made to special order are not returnable.

## VALUE ADDED TAX

Unless stated otherwise, our listing of prices include the current rate of Value Added Tax. This tax does not apply outside of the United Kingdom.

## IMPORT DUTY AND BROKERAGE (U.S.A.)

Most goods illustrated in this catalogue can be imported DUTY FREE under existing Customs Regulations (Customs Item Number 9810.00.1500). Customs authorities will require the signing of a statement to secure duty free clearance.

Customs Brokerage services may be necessary on some goods below \$1,000 value and will be necessary on goods over \$1,000 value, requiring payment of a Customs Brokerage fee.

Our U.S.A. Office is fully conversant with import tariffs, customs procedures, brokerage services, fees, etc., and can advise regarding these matters and give complete recommendations in regard to any purchase.

## SIZES AND CAPACITIES

All sizes and stated capacities are to be taken as approximate only.

## IMPORT DUTY, FEDERAL & PROVINCIAL TAXES (CANADA)

These are not included in our prices and where applicable are to be added. Church Vestments are assessed at a lower rate of Duty than personal clothing items.

## EXCHANGE CONTROL REGULATIONS

Restrictions exist on the exchange of some overseas currencies into Sterling. Customers are advised to consult with local Banks and Government agencies who will outline the correct procedures. Pro Forma documentation to assist in your local application for approval will gladly be sent in response to your letters/orders, and we will be pleased to help in any way we can to make satisfactory arrangements for payments.

Cat. No. 320/99 1999 © J. WIPPELL & CO. LTD.

J. WIPPELL & CO. LTD, P.O. BOX 1, 88 BULLER ROAD, EXETER, EX4 1DQ, ENGLAND

Telephone: (01392) 254234 Fax: (01392) 250868 E-mail: wippell@btinternet.com Internet: www.wippell.com

**LONDON OFFICE:**  
11 TUFTON STREET,  
WESTMINSTER, SW1P 3QB.  
Tel: (020) 7222 4528/9  
Fax: (020) 7976 7536

**MANCHESTER OFFICE:**  
NORTHERN ASSURANCE BUILDINGS,  
9-21 PRINCESS STREET, ALBERT SQUARE,  
MANCHESTER M2 4DN.  
Tel: (0161) 834 7967  
Fax: (0161) 835 1652

**USA OFFICE:**  
1 MILL STREET, PO BOX 468,  
BRANCHVILLE, NEW JERSEY 07826  
Tel: 973-948-2144 Fax: 973-948-3766  
Toll Free Customer Service (1-877) 947-7355  
Toll Free Fax (1-800) 525-3749  
(N. America Only)